

1.

Describing Distributions

* **SHAPE
CENTER
SPREAD!**

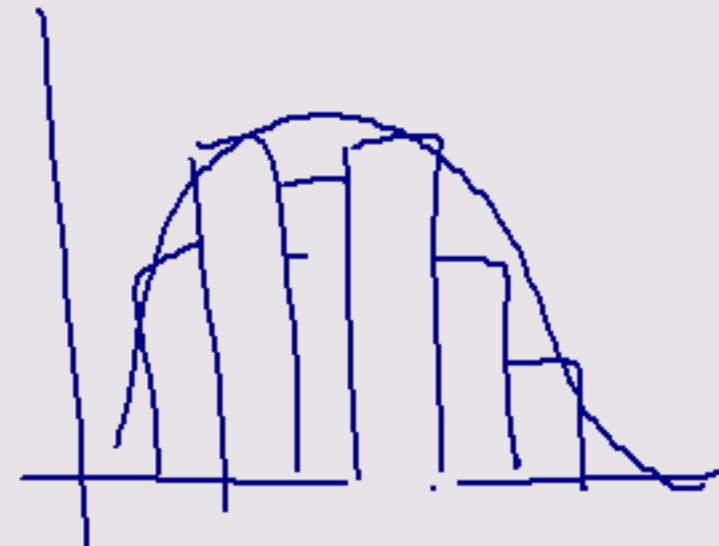
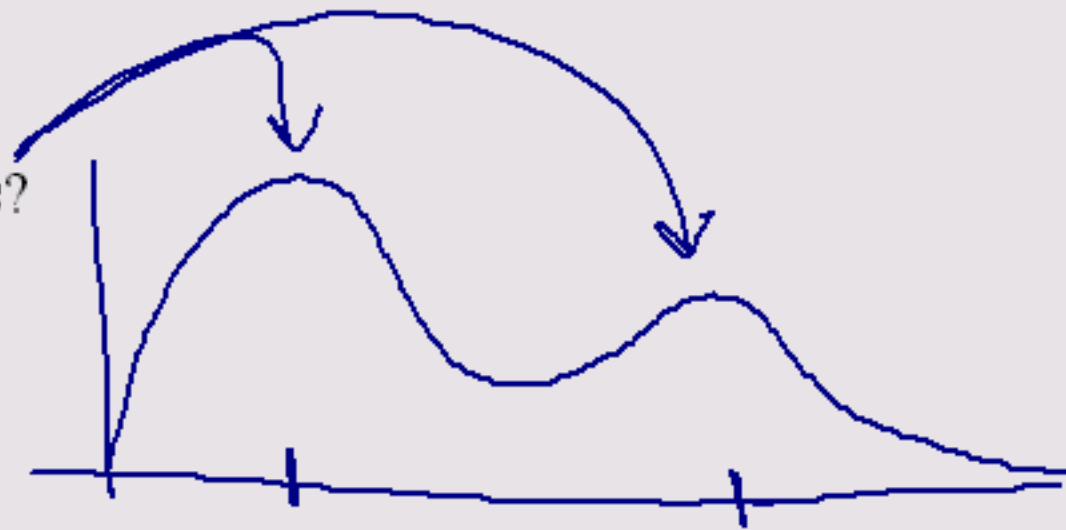
1- Overall Pattern

- Any deviations from the overall pattern?

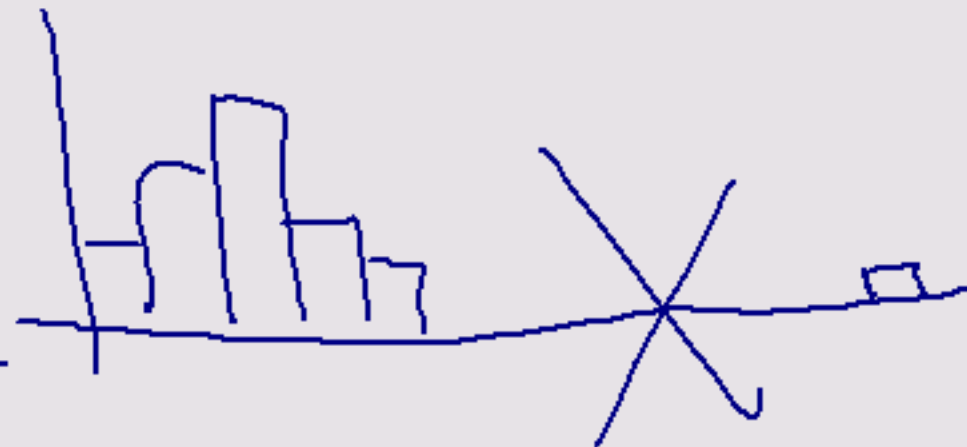
*

Shape

- Peaks?
where?

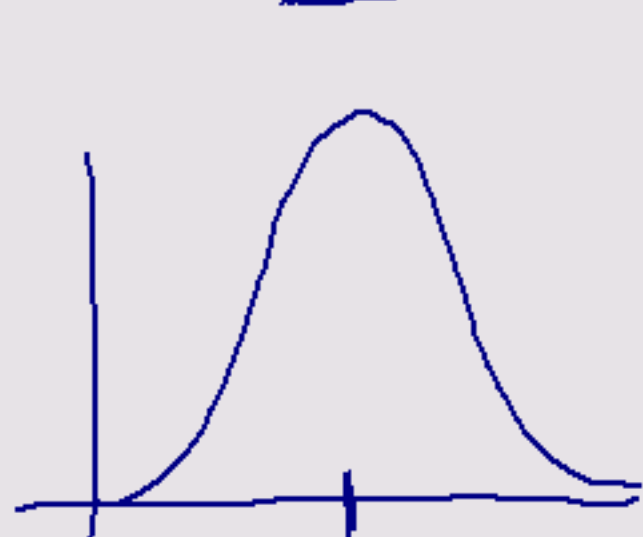


- Gaps? where?

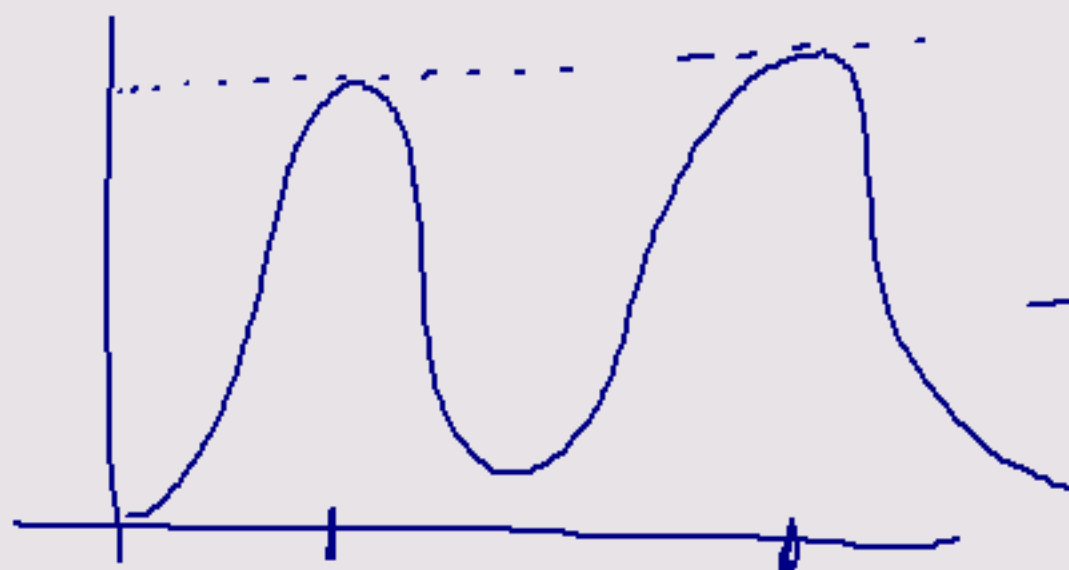
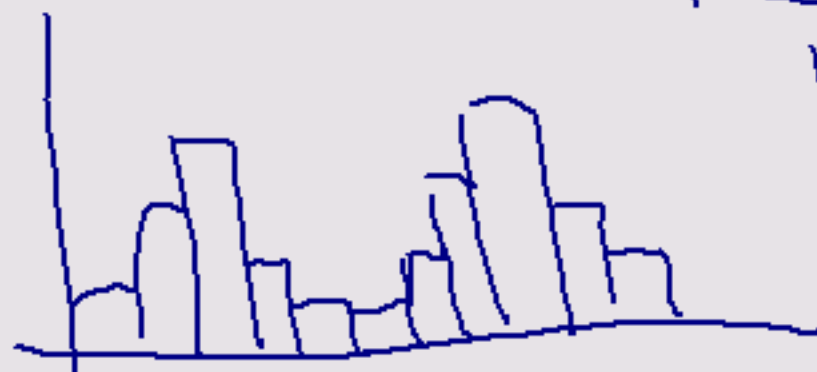


mode = most freq.

- Unimodal, Bimodal?



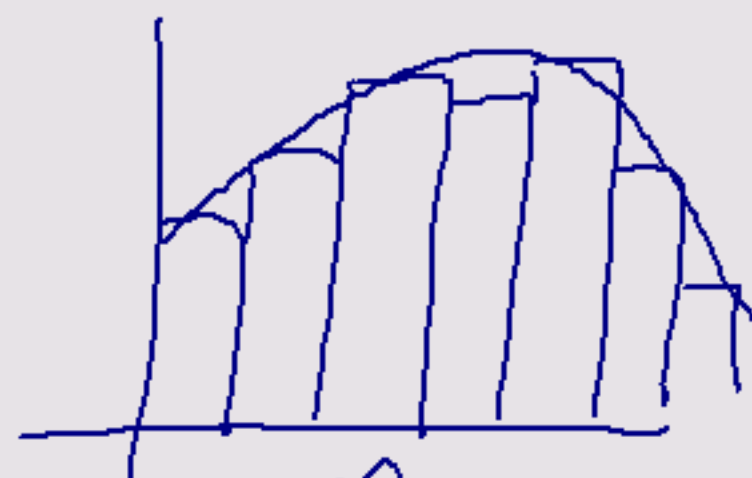
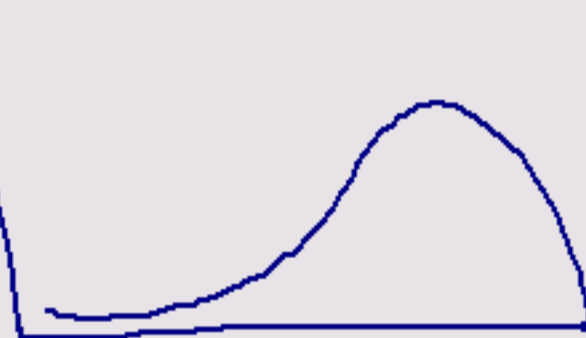
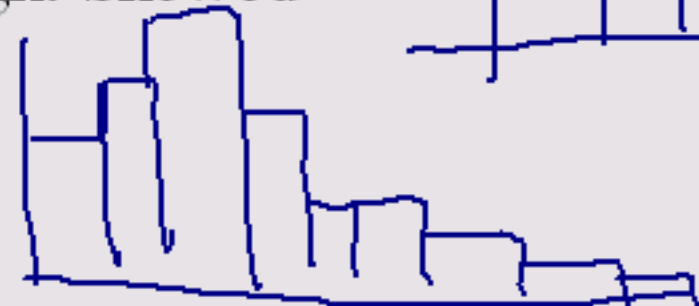
* roughly
Symmetric,



Left Skewed,



Right Skewed



uniform



* Center

- Approximation
- The middle (halfway) number

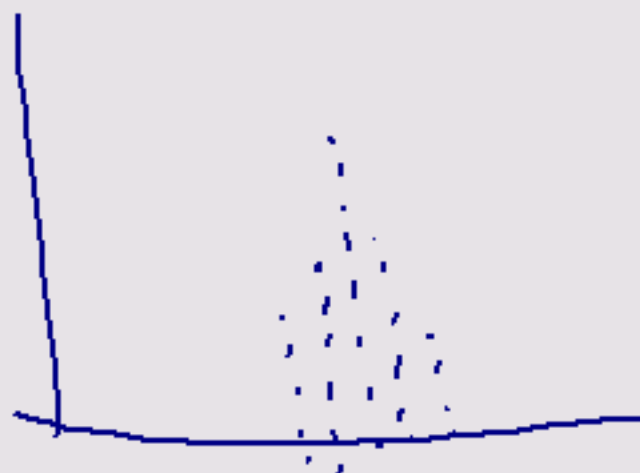
4-* Spread

- Range (lowest to highest number)

min max
(10, 50)

- Clustered?

clumped



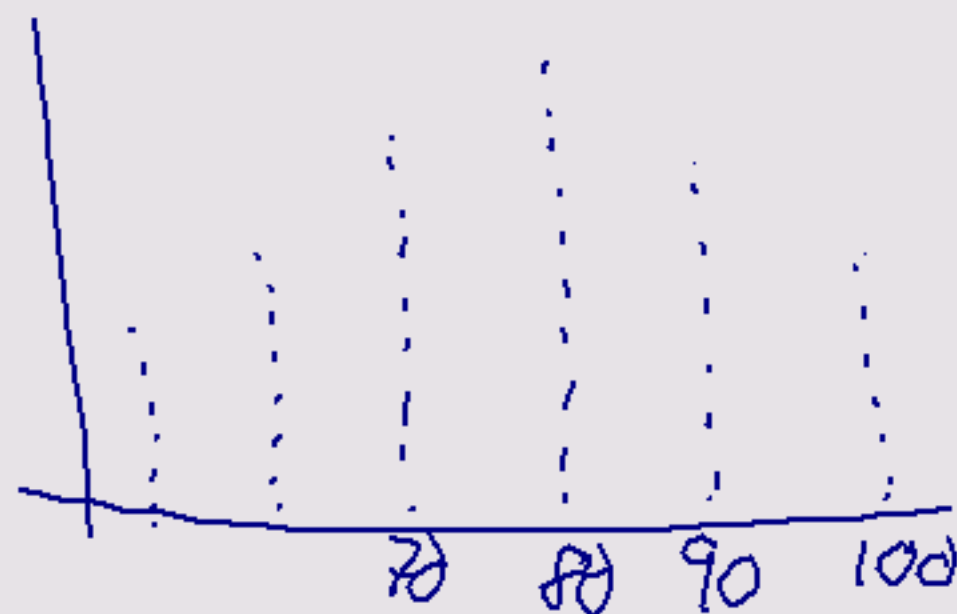
5- Outliers

- Unusually large or small deviations from the overall pattern



6- Granularity

- Consistent and understandable gaps in the values that the variable takes



Ex: 10 question MC

Complete the worksheet on Describing Distributions

